



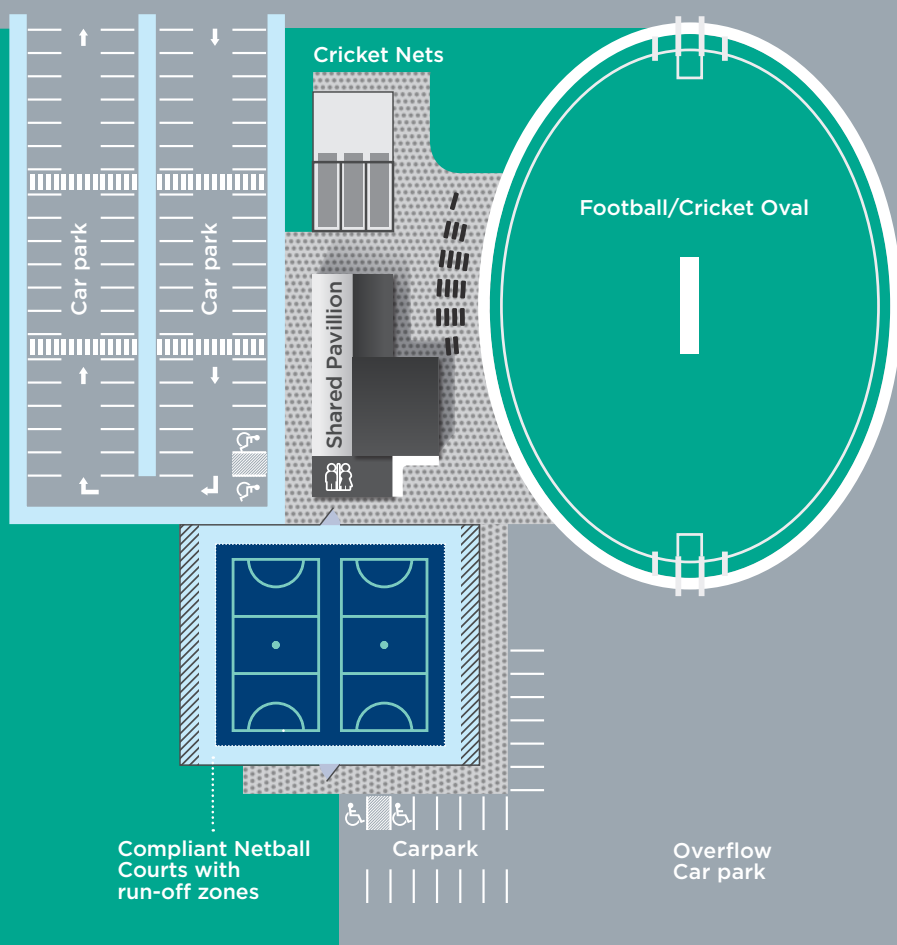
Inclusive Facilities Fact Sheet

Netball facility design needs to ensure netball courts, supporting infrastructure and amenities are accessible and inclusive to all. Netball Victoria (NV) has developed this fact sheet to provide Clubs, Associations, Leagues, Councils and Contractors with guidance when redeveloping or constructing new netball court facilities.

Netball facilities should be welcoming to the entire community regardless of age, gender, ability or mobility. NV offers a technical advisory service and encourages all stakeholders to liaise and consult directly with NV in the first instance and throughout the planning and construction of netball courts and facilities.

ALL NETBALL FACILITIES SHOULD BE WELCOMING AND INCLUSIVE TO ALL COMMUNITY MEMBERS

MULTI-SPORT VENUE EXAMPLE



- 
 Minimum 1.5m wide paths, accessible landings and ramps
- 
 Shelter and seating zone
- 
 Road and carpark area
- 
 Circulation space/pedestrian zone
- 
 Netball courts including run-off zones

INCLUSIVE NETBALL FACILITIES FOR EVERYONE

All netball courts and their supporting amenities should be accessible and inclusive to all members of the community.

There are a number of specific areas that netball facility managers should consider when creating an inclusive facility:

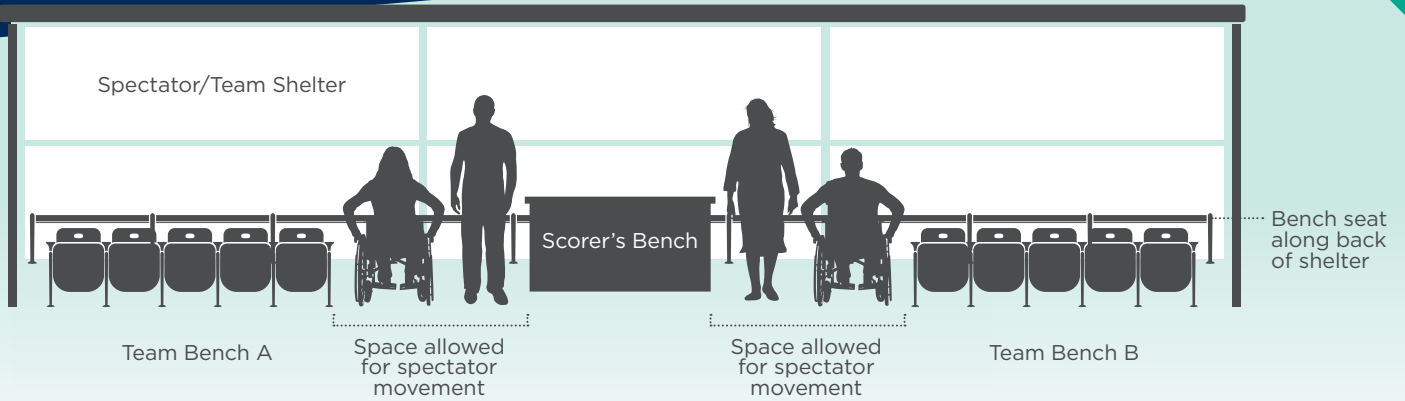
- Accessible path linkages throughout the site. Including connections from the court to car park, toilets and clubroom facilities.
- Close proximity and good sightlines to supporting facilities, car park and other precinct facilities.
- Clear wayfinding signage.
- Spectator movement and viewing provisions.
- Well-lit, slip resistant pathways and surfaces.
- All building entrances and internal designs for pavilions, clubrooms, change rooms and toilet facilities must comply with the current National Construction Code (NCC) Series.

INTEGRATION

The location of the netball courts is important for maximum inclusion

The facility should be in close proximity to

- Complementary sports and services.
- Car park facilities with firm and stable path connections.
- Integration of pavilion, change and toilet facilities.



CIRCULATION SPACE FOR SPECTATOR MOVEMENT AND VIEWING PROVISION – OUTDOOR AND INDOOR COURTS

Where possible, netball facilities should provide a continuous, accessible path of travel from the site entry to and through any spectator and viewing areas. The path of travel should be provided outside of the court's required run-off zones

The following is recommended:

- 1.2m to 1.5m wide path movement corridors to the end, side and/or between courts to allow safe unimpeded pedestrian movement without interruption to umpires and players when matches are underway.
- Viewing areas connected to, but located off, the continuous accessible path of travel.
- Viewing areas that provide clear lines of sight to the netball court.
- Dedicated spectator/shelter/seating zone to ensure a safe space for spectators without encroaching on the run-off zones. These should include circulation space between the shelter and court run-off zone.
- Accessible seating spaces must be available in a variety of locations throughout a building or facility that allows people of all abilities to sit together ie: variety of seats with/without backs and armrests and space for a wheelchair within coaches, scorers & spectator areas.

SURFACES, RAMPS AND STEPS

Netball facilities should have compliant surfaces, ramps and steps

- All surfaces, including ramps, should be firmly fixed and slip-resistant in all weather conditions to comply with AS 4586-2013.
- Any gradient steeper than 1:21 is classified as a ramp.
- All ramps and steps must have handrails fitted to both sides.
- Avoid single, isolated steps or sudden changes in gradient. If this is unavoidable, the area should be clearly marked with contrasting coloured tactiles to alert pedestrians to the potential risk.

Detailed guidance and standards for ramp and stepped access can be found in AS 1428.1-2009.

SLIP RESISTANCE

All court areas and pedestrian access paths, ramps and surfaces, must be firm and slip-resistant in all weather conditions

To ensure a safe surface for pedestrian movement, connecting paths and ramps should meet the AS 4586-2013 Slip Resistance Classification of New Pedestrian Surface Materials: Appendix A (Wet Pendulum Test Method) as a minimum.

Testing by a company accredited by the National Association of Testing Authorities (NATA) is recommended.

A minimum of five individual locations should be tested on each surface using both slider 55 and slider 96 and shall achieve Pendulum Classification P5 as a minimum or a mean BPN 75 for both sliders. Note: Netball courts and run-off areas must achieve a mean BPN 75 as a minimum.

PATHS

A continuous accessible path should be provided to connect

- Car parking and public transport areas to the netball courts.
- Netball courts to supporting amenities such as change rooms, toilets, clubrooms and meeting areas.
- Netball courts to spectator and shelter areas.

All paths should

- Be the preferred 1.5m width to allow a wheelchair and person/pram to pass.
- Have no trip hazards. Any sudden height change in surface gradient, greater than +/- 2mm (such as a lip, heaving crack or small step) is considered a trip hazard.
- Ensure that hard and soft landscaping reinforces the route and does not obstruct the continuous accessible path.
- Have a firm non-slippery surface in all weather conditions such as asphalt or concrete with a brush finish.
- Have a clearance overhead of 2m for the full length (1.98m at doorways).
- Be fitted with contrasting colour Tactile Ground Surface Indicators to comply with AS/NZS 1428.4.1-2009, especially with changes in levels or direction.
- Have a cross fall no steeper than 1:40, (or 1:33 if Bitumen).
- Have landings and circulation space provided at every doorway, gate, and changes in direction.
- Be lit to comply with AS/NZS 1158 series - 'Lighting for roads and public spaces' to enable safe passage at night.
- Remain clean and clear of obstacles.

Refer to AS 1428.1-2009 for detailed guidance and standards for paths as the minimum requirements are variable depending on path length, type and intended use.



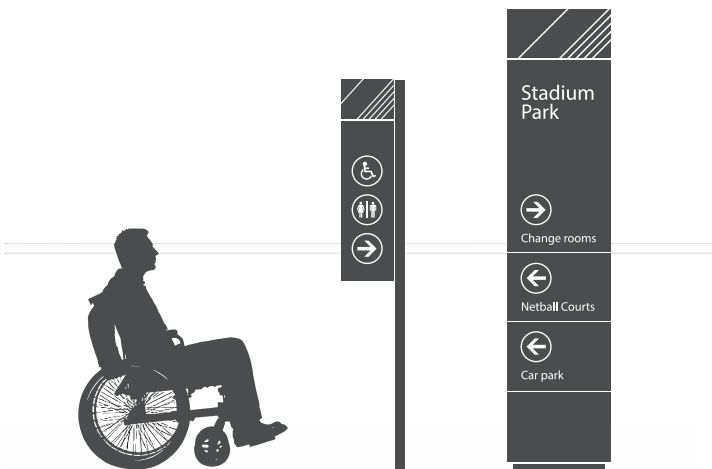
1.5m width, or greater, to allow a wheelchair and person/pram to pass

SIGNAGE

Netball facilities should have clear directional and informative signage

Signage should:

- Welcome, inform and reassure people.
- Introduce and direct people to the courts and supporting facilities and amenities.
- Be positioned where visually impaired people can get close to it.
- Be visible, obvious, clear and consistent throughout the facility.
- Incorporate commonly used words and symbols that are easy to understand and globally understood.
- Not cause obstruction or create a safety risk.



Keep signage, simple, clear and accessible

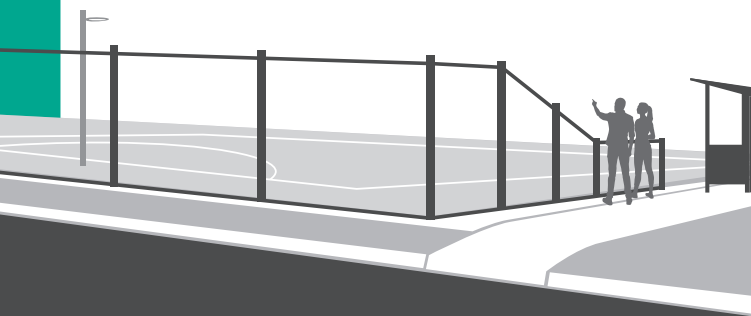
FENCING

Netball facilities should have a welcome feel

If fencing is installed the following is recommended:

- Gates or access points with 1.1m or greater wide opening
- A medium height (2m) to all baselines and low height (1.2m) to sidelines wherever possible to improve spectator participation.
- Black PVC is preferred to blend with the surrounds, especially if high fencing is required for security or safety reasons.
- Emergency/maintenance gate access with 3m or greater wide opening

All sports chainmesh fencing must comply with AS 1725.5-2010 (low) or AS 1725.2-2010 (high).



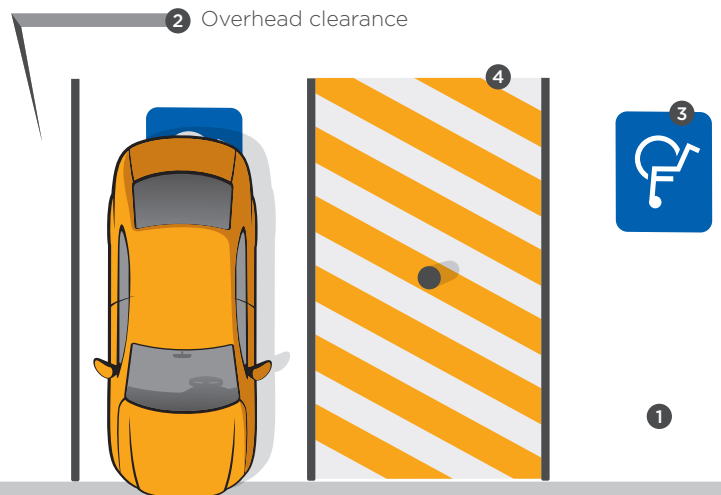
PARKING

Netball facilities should be well supported with accessible car park opportunities

Parking should:

- Be in close proximity to the netball facility.
- Provide adequate numbers of all abilities car park spaces to comply with AS/NZS 2890.6-2009 'Off-street parking for people with disabilities'. These should be located as close to the netball facility as possible.
- Be well connected by firm paths to the netball courts and supporting amenities.
- Provide ample parking spaces to meet the needs of the facility at peak times and as per local government requirements. Car parking should comply with AS/NZS 2890.1-2004 Part 1, 'Off-street car parking'.
- Be well lit to comply with AS/NZS 1158 series - 'Lighting for roads and public spaces' to enable safe passage at night.

Note: Standards regarding parking requirements are comprehensive. Advice should be sought from a professional consultant such as a traffic engineer early in the design process.



Accessible Parking Summary

- 1 Dedicated angled space 2400mm wide and 5400mm long.
- 2 Overhead clearance on roadways (minimum of 2200mm) and at any designated accessible parking bay (minimum of 2500mm) to allow for use by a vehicle fitted with roof mounted storage device.
- 3 International Symbol of Access 800-1000mm high within a blue rectangle with no side greater than 1200mm, located in the centre of the space 500 -600mm from its entry.
- 4 Shared pathway (at grade) 2400mm wide and 5400mm long.

ACCESSIBLE TOILETS

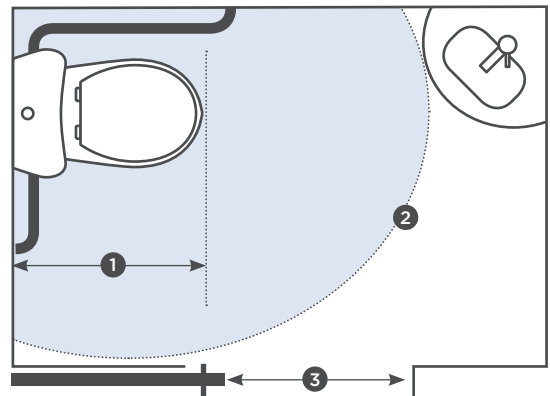
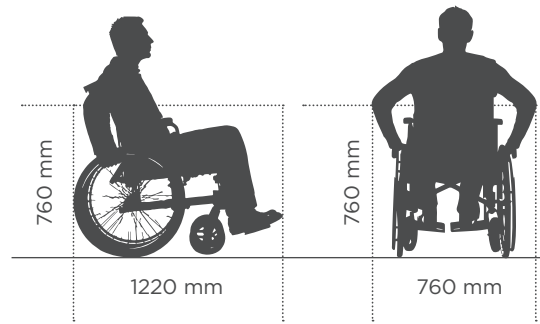
Netball facilities should have access to appropriate toilets for all users including people with mobility challenges

- The toilet and change room facilities should be well connected with an accessible path or ramp.
- A minimum 850mm door opening is required.
- The number of standard, accessible and/or ambulant toilets and the size of the change area provided, should be adequate for the size and needs of the netball facility at peak times.

NOTE: There are a number of variables that affect the overall size of an accessible toilet facility.

- The toilet, hand basin and door locations will determine the circulation space required and how they overlap, in turn this will determine the overall size of the accessible toilet facility required.
- All controls (door handles, switches, taps etc) should comply with AS1428.1, be clearly identifiable & be operational with one hand.
- Door handles should be D-shaped to lessen hand slip and provide easy grip.
- Water taps should have lever handles, sensor plates, or other similar controls.
- A level transition or an appropriate threshold or step ramp at the entry door is required.

NOTE: Detailed guidance and standards for toilet and shower access can be found in AS 1428.1-2009.



Overhead view of an accessible toilet

- 1 790–810mm front of pan to rear wall
- 2 A minimum 1900 x 2300mm to a height of 2000mm pan circulation space
- 3 A minimum 850mm clear opening width at doors (including active leaf) with circulation space provided at both sides of door that considers angles of approach and does not impede on the use of elements within the facility, e.g. basin

IMPORTANT

This Fact Sheet is to be used as a guide only. When designing any netball facility the following Acts, Standards, Codes and further reference links should be referenced:

- Disability Discrimination Act (DDA) 1992.
- Australian Standards (note Australian standards must be purchased)
- AS 1428.1-2009 'Design for access and mobility, General requirements for access - new building works'.
- AS/NZS 2890.6-2009 'Off-street parking for people with disabilities'.
- AS/NZS 2890.1-2004 Part 1, 'Off-street car parking'.
- AS/NZS 1428.4.1 - 2009 'Tactile Ground Surface Indicators for the Orientation of People with Vision Impairment'
- AS/NZS 1158 Set: 2010 'Lighting for Roads and Public Spaces'.
- AS 4586-2013 'Slip Resistance Classification of New Pedestrian Surface Materials'.
- Universal Design Australia (universaldesignaustralia.net.au/2015/10/ud-and-sport-and-recreation-facilities/) Includes fact sheet noting the 7 Universal Design principles.
- National Construction Code (NCC) Series 2012 vol.2 Building Code of Australia Class 1 and Class 10 Buildings.
- Sport & Recreation Victoria Design For Everyone Guide (www.sport.vic.gov.au/publications-and-resources/design-everyone-guide/index-elements/spectator-and-viewing-areas)

ADDITIONAL RESOURCE MATERIALS

These resources feature a range of new materials and engaging tools to give you everything you need to start your inclusion journey in your Club or Association.

To assist with creating a more inclusive and connected netball facility, visit:

- One Netball - onenetball.org.au
- Netball For All - vic.netball.com.au/netball-for-all

For more information and advice, contact:

Netball Victoria
Telephone 03 9321 2222
info@netballvic.com.au
www.netballvic.com.au

NV's Preferred Technical Advisor

2MH Consulting
Telephone 03 5422 2176
admin@2MHConsulting.com.au
www.2MHConsulting.com.au

2MH Consulting 