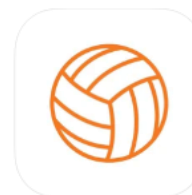


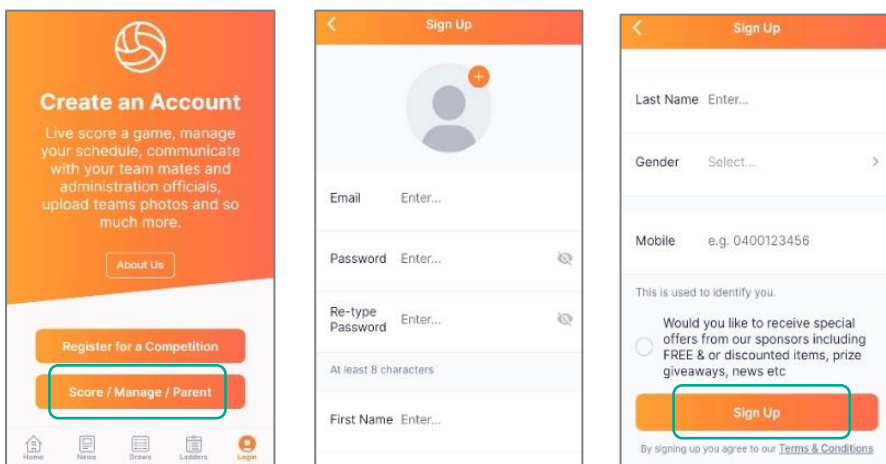
Download the Netball Connect app for IOS or Android via the app stores.

Scorers, managers or coaches are required to Sign Up and create an account with Netball Connect so features relevant to your role can be accessed, such as scoring, communicating with team members, viewing statistics and much more.

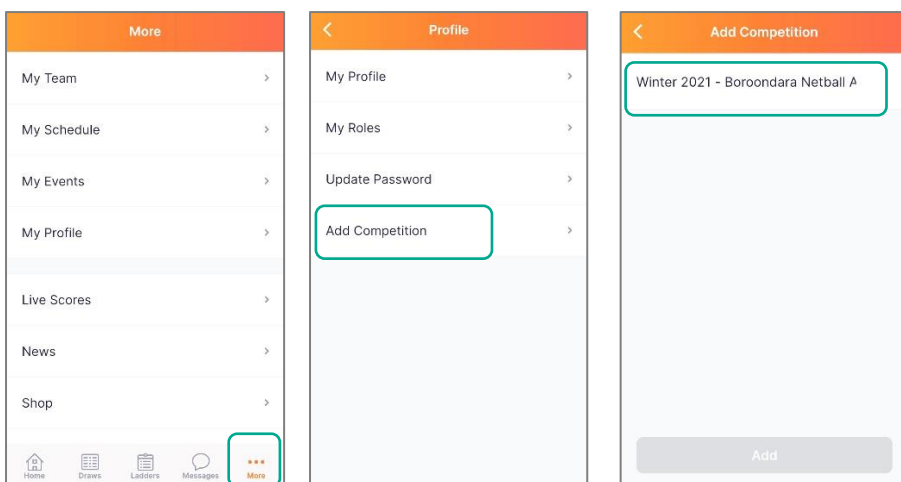
The signup process is quick and easy. Download the app, open it and click 'Score/Manage/Parent' at the bottom of the screen, enter your details into the fields and click 'Sign Up'.



**NetballConnect** 4.2  
 World Sport Action Pty Limited  
 Designed for iPad  
 #73 in Sports  
 ★★★★★ 3.3 • 90 Ratings  
 Free



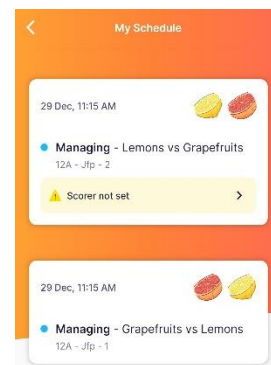
Add the competition to your profile. This will ensure your name appears in the dropdown list for Managers to allocate you as scorer for a game.



## SCORING AND TEAM ATTENDANCE

Managers – When you sign into the App the manager cards for your next two matches will appear on your home screen (click on More > Your Schedule to see all your upcoming matches). Click on these cards to see the details of the game and assign a scorer.

Note: most competitions assign a single scorer for each game (the first team listed/home team is responsible for scoring). If you are the away team you will not be required to allocate a scorer. The Away team should monitor the game and live scores on their own device to confirm scores as the game progresses.



## COMPLETING TEAM ATTENDANCE



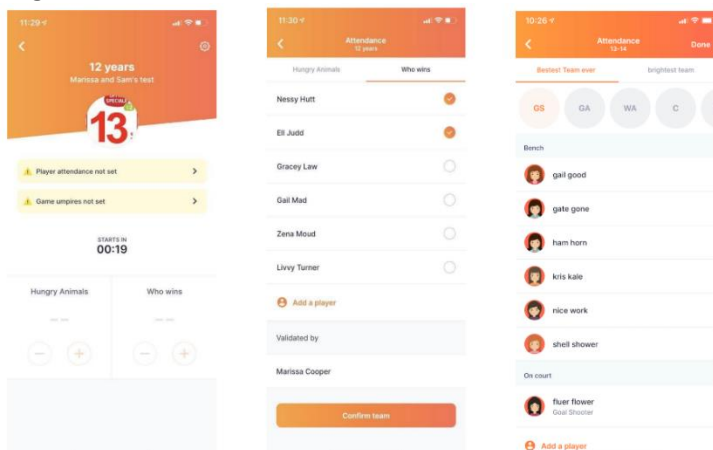
Click on Managing tile. In this tile you can assign a scorer, set the team attendance, record the game umpires and see the court location. You are also able to see which players have confirmed whether they are attending or not.

Click on team attendance and select players in attendance. Please note - If the competition is tracking positions, you will see a different screen showing positions at the top of the screen. Select the position first and then the player assigned to that position.

Depending on the rules of your association you may be required to check your own team attendance and that of the opposition's team. Make sure your name is recorded at the bottom of the screen in the Validated by the box. Once the game has started you cannot unclick a player but you can always add players.

## BORROW A PLAYER

If you need to Borrow a Player click Add and find the name of the player. Players must be registered for either a full Netball Victoria Membership, or registered for a Single Game. Depending on your competitions rules, you may be able to borrow players who are registered anywhere in the state. Alternatively, your competition may only allow borrowing of players registered to your competition. If you cannot find the name of the borrowed player they need to pay the relevant fees. Players can register directly to the competition within the app by selecting More > Actions > Register.

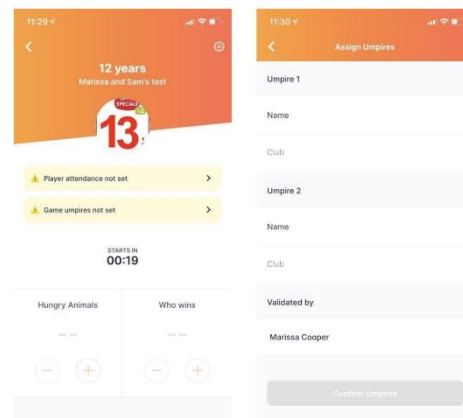


### RECORDING UMPIRE NAMES AND CLUBS

Click on Game Umpires from your manager game card. You can update their details any time prior to the end of the game. If you see the warning on the scoring screen you can click on the warning and update the details accordingly. Once complete this warning will be removed.

#### Please note:


Organisations using the integrated umpire solution means umpire names will be pre-populated, you simply need to confirm.

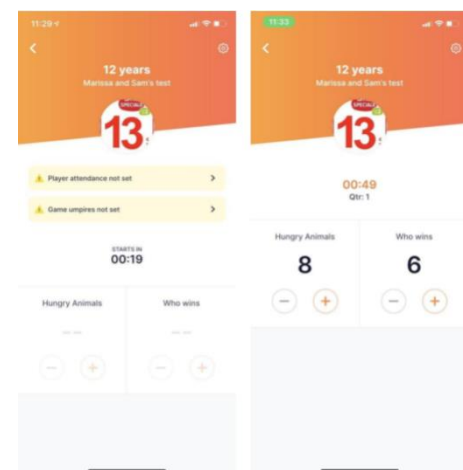


### SCORING A GAME

Depending on the time set by the Competition organiser, the scoring screen will become active a set time before the game starts. The scoring panel will remain locked until that time.

A warning sign will appear on the scoring screen stating that Team Attendance and Game Umpires are not set (this will only apply if set by competition organisations). Click on Team Attendance Not Set or Game Umpires not set and it will take you to the respective screens. The warnings will disappear once complete.

Press the  scoring button to mark a goal scored. When the period (quarter or half) finishes the scoring screen will ask you to confirm the score. In case of a goal scored right on the break, you can select NO to confirming scores, amend the score and then you will be asked again to finalise the scores. Press YES to confirm the final scores.



### TAKING AWAY A POINT (WHEN A POINT WAS ADDED BY MISTAKE)

If you accidentally press the + scoring button by mistake you can minus a point.

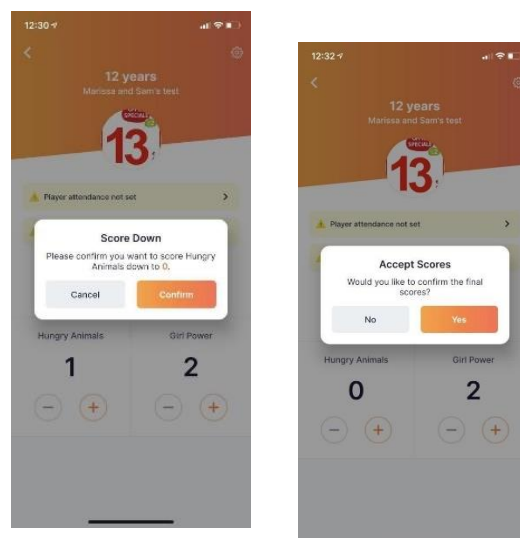
If you press  a pop-up notification will appear as below.

If you click CONFIRM, the point will be removed.

If you click CANCEL the score will remain at the previous numbers.

The Scoring Screen will ask you to confirm scores at the end of each period and the end of the game.

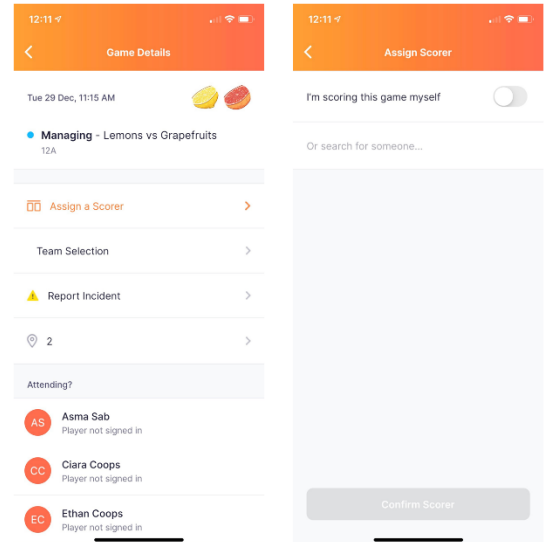
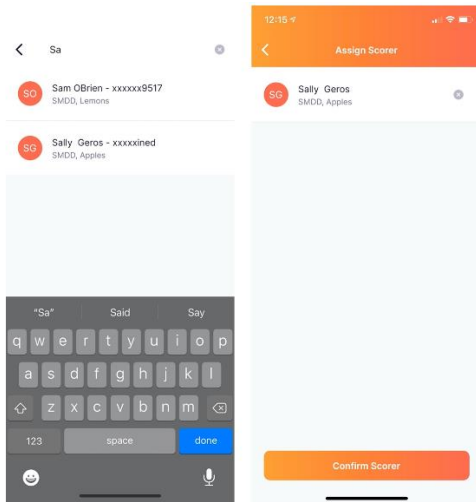
When the period (quarter or half) finishes the scoring screen will ask you to confirm the score. You can choose to say NO and amend the score, the popup will reappear, select YES to confirm the final scores for the period.



## ASSIGNING A SCORER

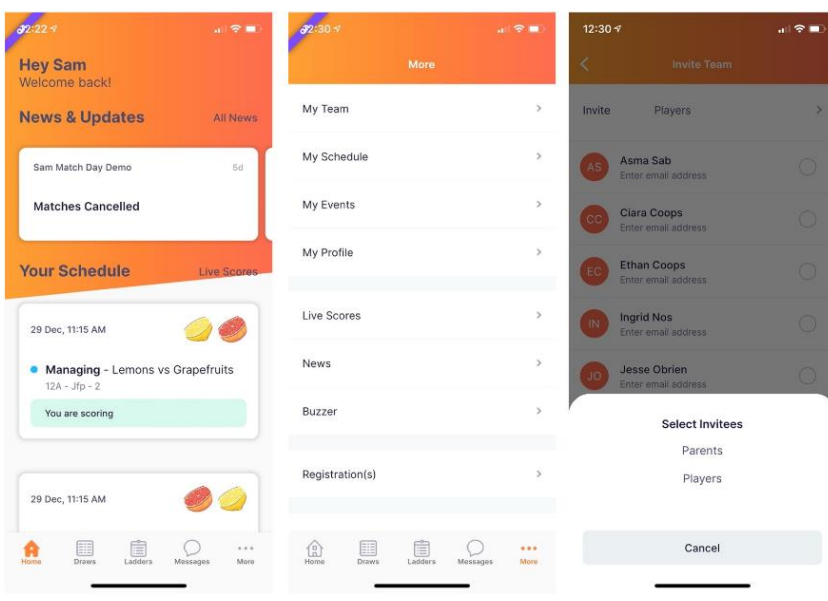
As manager you can assign other people to score. They must have downloaded the app, created an account and added the competition to their profile to appear in the scorer list. Refer to page 1 for process.

Their name will appear, click on it and then it will show in your watch list. Press Confirm Scorer. You can remove them any time and add someone else by clicking on the x.



## UPDATING PLAYER EMAILS & INVITING PARENTS

To update player emails or invite parents to their child's schedule you need to re-invite them to use the App. Click on More >Your Team >Invite Team to App. Here you can toggle between parent and player based on who you are inviting at the top of the screen.



The screen shows the status of the invitation - Sent, Accepted, No Response. You can resend the invitation to them as required.

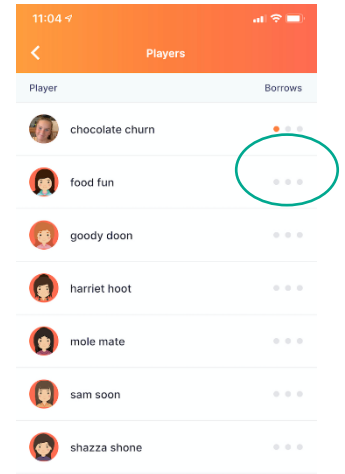
### TRACKING STATISTICS

A number of statistics can be tracked via the App including:

- Number of times a player is borrowed
- Time on court
- Goal %
- Position Tracking

Borrowed Players – shows the number of times a player has been borrowed by clicking on More > Your Team > Borrowed Players. Red dots indicate borrows.

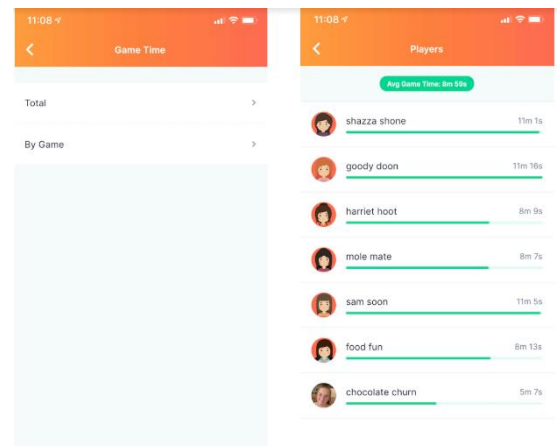
\*Note that the Competition Organiser must have switched on Statistic Tracking for this competition to allow this feature.



### TIME ON COURT

Depending on what game time your Competition Organiser is tracking (Games, Periods or Minutes) you will see the time players have played by game and by total competition.

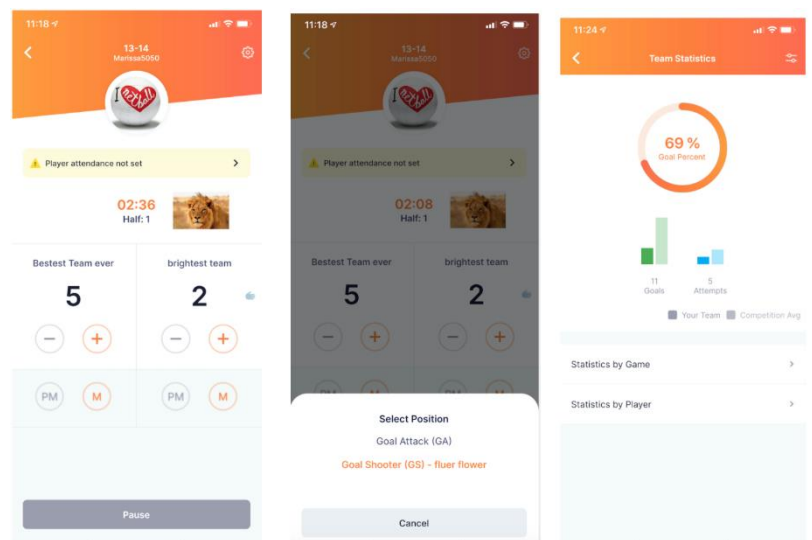
Click on More > Your Team > Game Time (this example shows minutes tracked).



### GOAL PERCENTAGE %

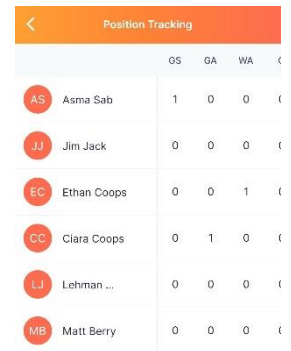
Competition organisers can enable Goal tracking. If this has been enabled you see a slightly different scoring screen. Once attendance is completed when you click on +, PM or M you will only see the position and the name of the player next to it.

To see the results of your shooter's goals click More > Your Team > Goal Statistics. You can choose to view by game and by player.



### POSITION TRACKING

This allows you to track and review positions a player has played either by game or by season.

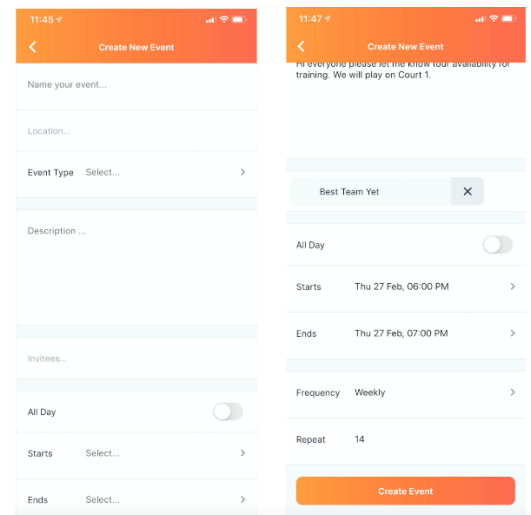


	GS	GA	WA	
AS Asma Sab	1	0	0	(
JJ Jim Jack	0	0	0	(
EC Ethan Coops	0	0	1	(
CC Clara Coops	0	1	0	(
LJ Lehman ...	0	0	0	(
MB Matt Berry	0	0	0	(

### CREATING AN EVENT


Create an event in the App for events like training or a social gathering. Click More > Events.

You can choose to make the event once-off, daily or weekly. Your invitees will receive the event card and can then advise their attendance.




### COMMON ISSUES

*Searching for a user to assign them as a manager/scorer/umpire/coach and cannot find them.*

- To be assigned as a Manager/Scorer etc the user has to have created an account and be logged into the app. If a user has NOT created an account in the bottom right hand corner of the app you will see  , the account icon.

*I have assigned someone to score but they aren't receiving the invitation.*

- Check to see if the user is logged out and currently in the spectator area. If they have  in the bottom right hand corner they are logged out and need to log back in.
- Check to see if the user has a duplicate account, the invitation may be with the wrong account. Competition and Club Administrators can check this by searching the users name in the 'Users' module. Either re invite the correct account or have them log into the other account.

*I have downloaded the app but it's blank or spinning.*

- Check to see if you have enabled the app to use mobile data.
- If they are connected to WiFi, the WiFi may be running at capacity.

*My contact details are wrong.*

- Users can change their email, mobile number etc by going to More > My Profile > My Profile and updating.

*I have forgotten my password or my password is incorrect.*

- Users can click 'Forgot/Reset Password'. They will be asked to enter their account email address and will be sent a password reset link. Please check your inbox (and also promotion and trash folders) for the new link.